

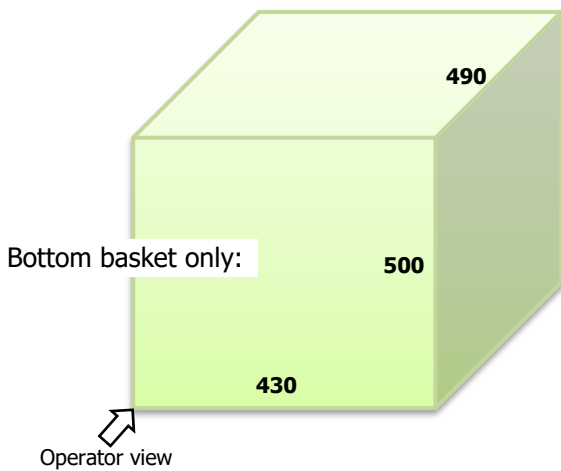
# CompaCLEAN

(U.S. power supply)

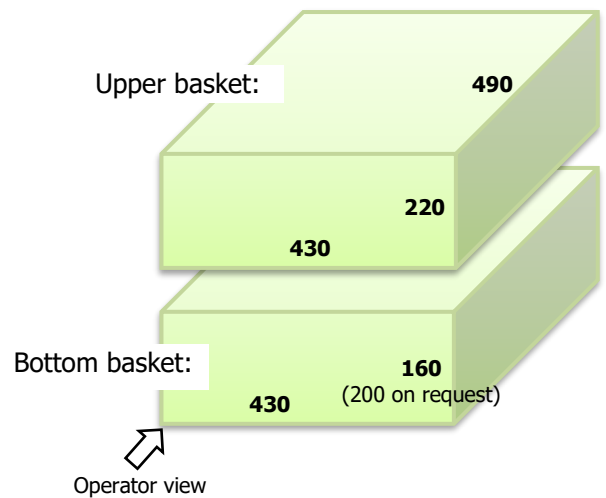
HIGH PRESSURE SPRAY-IN-AIR CLEANING SYSTEM



**Standard inner basket space (other on request). With bottom basket only:**



**Standard inner basket space (other on request). Bottom basket, upper basket and centric nozzle system:**



## Technical data

- Standard usable space for cleaned material (WxLxH) 480 x 500 x 500 mm (with bottom basket only)
- Standard usable space for cleaned material (WxLxH) 480 x 500 x 160 mm (200 mm on request) and 480 x 500 x 220 mm (with upper basket and centric nozzle system)
- Particular position and space depends on given clamping
- Specific requirements to be consulted with manufacturers' representatives
- Customization available upon request

## Machine types

CompaCLEAN II	Wash (Heat to 60 °C) + Tap Water Rinse + Dry
CompaCLEAN III	Wash (Heat to 60 °C) + 1 <sup>st</sup> Rinse (Tap water or DI water) + 2 <sup>nd</sup> Rinse (DI water) + Dry

## Process data

(Use, capacity and consumption of machine)

Typical consumption of cleaning agent w/o load (per one cycle)	0.15 liter
PCB defluxing and Misprints – max usable area at the disposal	2.55 m <sup>2</sup>
Standard max. components height from front side + rear side	40 mm (other on req.)
Max load in 3U–160 eurocards (100x160mm) per one cycle	140 pcs
PCBA + Misprints 3U–160 eurocards (100x160mm) typical total cycle time	60–80 min
PCBA + Misprints 3U–160 eurocards (100x160mm) typical quantity per hour	Up to 140 pcs
PCBA + Misprints typical consumption / cycle (depends on PCB shape and pollution)	0.3–0.4 liter
Solder pallets – available space (necessary to specify clamping)	480 x 500 x 500 mm
Solder pallets typical quantity per hour	4–6 pcs
Typical total cycle time for solder pallets	45–60 min

*Typical consumption and typical time are based on values from the field, however cannot be guaranteed because of other factor influence.*

## Technical parameters

Machine dimension (WxLxH)	1050 × 1700 × 2140 mm
Weight (without liquid)	440–490 kg
Machine noisiness	L <sub>A</sub> <70 dB
Power supply voltage	3x 120 V/ 208 V, 60 Hz
Power input	15–21 kVA

## Adjustable parameters

All the parameters are adjusted by means of the LCD touch screen.

Washing time (all types)	0–99 min.
Washing medium temperature (optional)	Up to 60 °C
Rinsing time (all types)	0–99 min.
Rinsing temperature (optional)	Up to 40 °C
Conductivity (II, IIR, IIR+,III)	0–999 µS/cm
Drying time (all types)	0–99 min.
Drying temperature (all types)	Up to 110 °C
Number of program registers (settings)	99

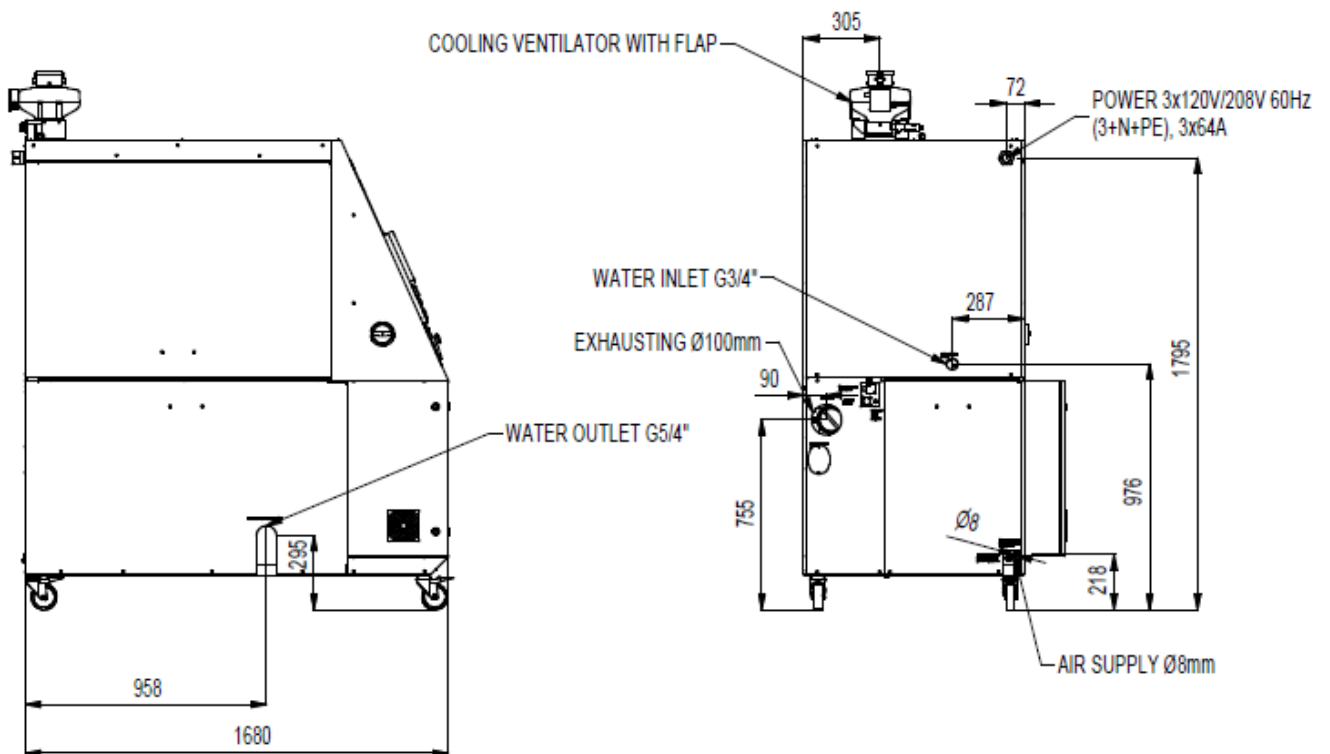
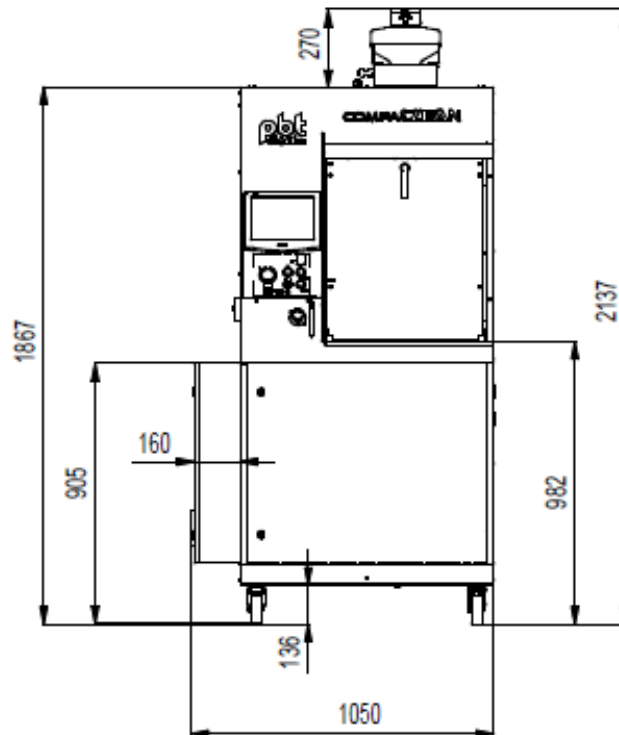
*Note: All the adjusted parameters are not changed when the power supply is switched on or off.*

## Technological parameters

<b>Standard – S</b>	<b>Not possible – N</b>	<b>II</b>	<b>III</b>	
Power input (according to configuration)		15–20	16–21	kVA
Washing – pressure on the nozzles max/min (sprayed from all 69 nozzles)		2,3/1,7	2,3/1,7	bar
Washing – max. flow (sprayed from all 69 nozzles)		140	140	l/min
Washing – pressure on the nozzles max/min (sprayed from 33 upper nozzles)		3,6/3,1	3,6/3,1	bar
Washing – max. flow (sprayed from 33 upper nozzles)		85	85	l/min
Rinsing w/o chemical filters – pressure on the nozzles max/min (sprayed from all 69 nozzles)		0,6/0,1	0,6/0,1	bar
Rinsing w/o chemical filters – max. flow (sprayed from all 69 nozzles)		70	70	l/min
Rinsing w/o chemical filters – pressure on the nozzles max/min (sprayed from 33 upper nozzles)		1,7/1,2	1,7/1,2	bar
Rinsing w/o chemical filters – max. flow (sprayed from 33 upper nozzles)		58	58	l/min
Rinsing with chemical filters – pressure on the nozzles max/min (sprayed from all 69 nozzles)			0,3/0	bar
Rinsing with chemical filters – max. flow (sprayed from all 69 nozzles)			50	l/min
Rinsing with chemical filters – pressure on the nozzles max/min (sprayed from 33 upper nozzles)			1,3/0,8	bar
Rinsing with chemical filters – max. flow (sprayed from 33 upper nozzles)			50	l/min
Washing tank volume max/min		71/35	71/35	l
Rinsing tank volume max/min		60/35	35/18	l

*Note: Approximate values of pressure and flow are stated. The real values can be a bit different depending on the tolerances of used components. These differences have no effect on cleaning*

## Dimensions



## Required service and maintenance area

From the front side of the machine      minimally 0,8 m – area for machine operation and accessing area into the switchboard box

From the left side                              min. 0,8 m – area for machine service and maintenance

From the right side                            min. 0,1 m

The machine rear part                        min. 0,2 m – central exhaust system connection

The height of the machine = **2,14 m**

The height of machine with signal tower for indication of machine status (optional) = 2,22 m

The width of machine with pump unit of drain water (optional) = 1,13 m

